

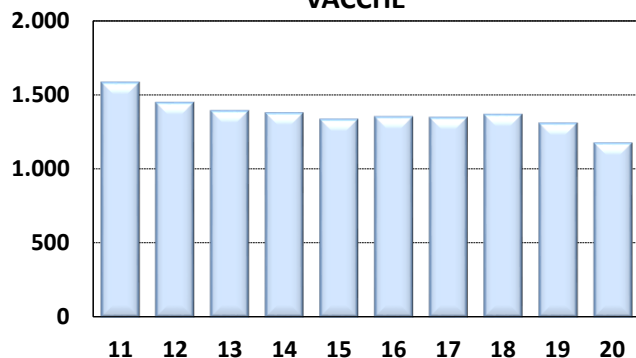


# Medie Produzioni Latte/Grasso/Proteine Vacche Razza Frisona Controllate 2020

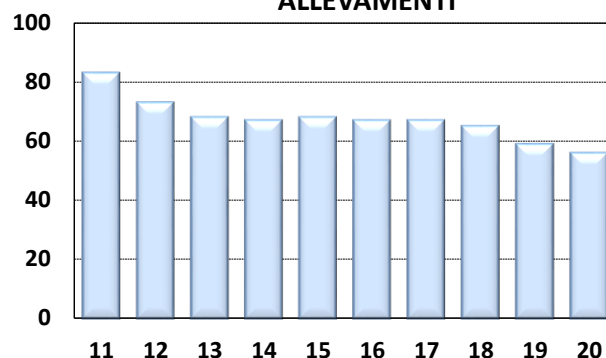
## ISERNIA

ANNO	CONSISTENZA		TREND FENOTIPICO			VACCHE x ALLEVAMENTO
	ALLEVAMENTI	VACCHE	LATTE KG	GRASSO %	PROTEINE %	
2011	83	1.574	6.748	3,50	3,22	19
2012	73	1.437	6.966	3,54	3,24	20
2013	68	1.383	6.948	3,60	3,22	20
2014	67	1.368	6.975	3,51	3,15	20
2015	68	1.325	6.969	3,47	3,17	19
2016	67	1.341	7.157	3,54	3,22	20
2017	67	1.337	7.194	3,54	3,22	20
2018	65	1.358	7.369	3,61	3,27	21
2019	59	1.297	7.287	3,58	3,21	22
2020	56	1.165	7.349	3,53	3,27	21

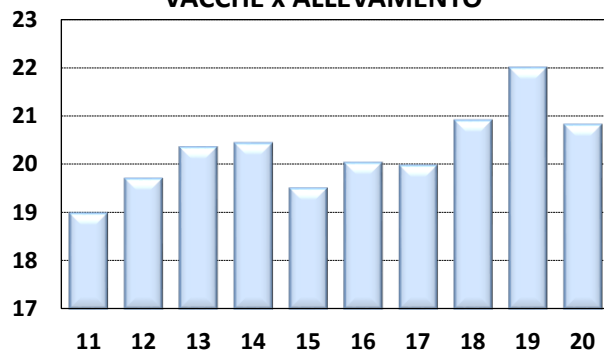
### VACCHE



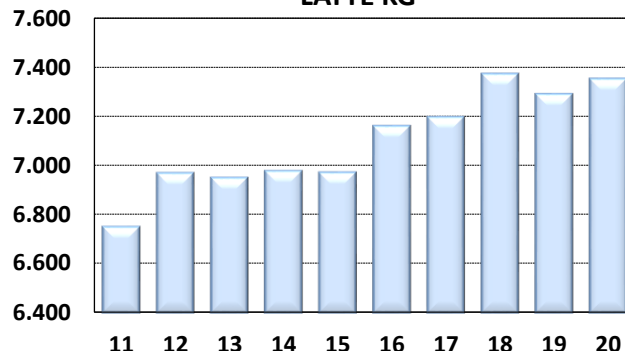
### ALLEVAMENTI



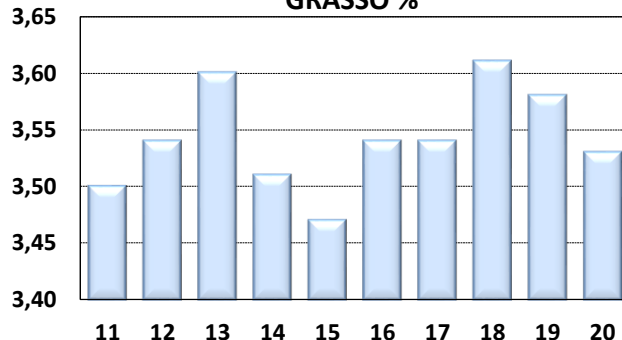
### VACCHE x ALLEVAMENTO



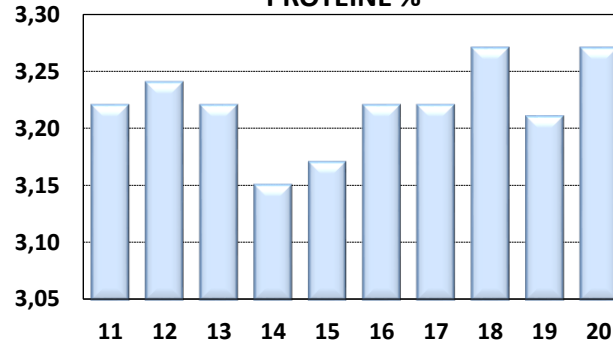
### LATTE KG



### GRASSO %



### PROTEINE %



I DATI DEI CONTROLLI (PESO SU PESO) DIFFERISCONO DAI DATI DI CONSEGNA (PESO SU VOLUME) DI 0,3%. PER IL 2019  
LE RELATIVE PERCENTUALI SONO: GRASSO % 3,64 PROTEINE % 3,37