

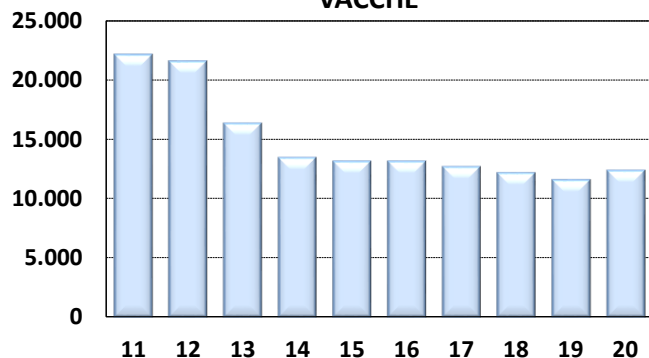


Medie Produzioni Latte/Grasso/Proteine Vacche Razza Frisona Controllate 2020

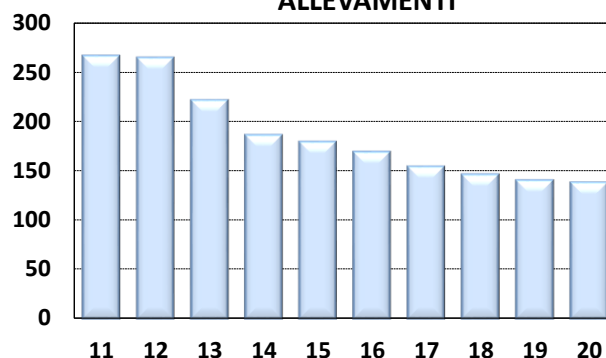
PADOVA

ANNO	CONSISTENZA		TREND FENOTIPICO			VACCHE x ALLEVAMENTO
	ALLEVAMENTI	VACCHE	LATTE KG	GRASSO %	PROTEINE %	
2011	266	22.080	9.083	3,69	3,39	83
2012	264	21.522	9.202	3,74	3,44	82
2013	221	16.267	9.027	3,75	3,37	74
2014	186	13.361	9.120	3,70	3,33	72
2015	179	13.054	9.351	3,68	3,30	73
2016	169	13.052	9.569	3,82	3,33	77
2017	154	12.600	9.668	3,74	3,37	82
2018	146	12.077	9.987	3,76	3,39	83
2019	140	11.495	9.870	3,86	3,40	82
2020	138	12.283	10.199	3,83	3,38	89

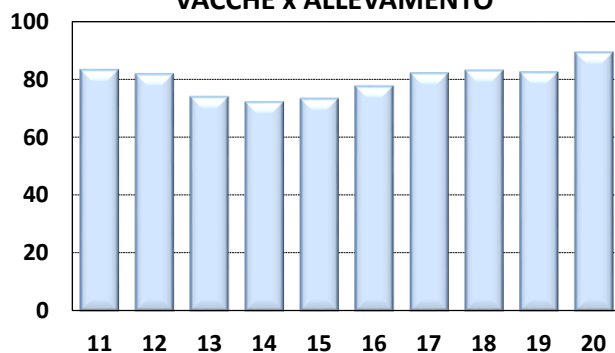
VACCHE



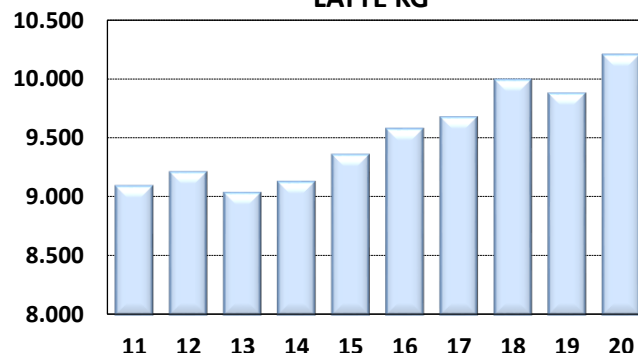
ALLEVAMENTI



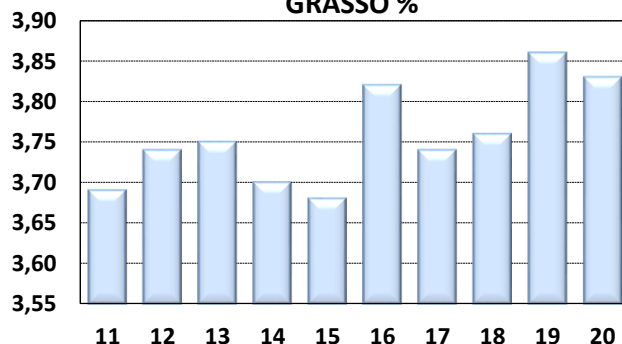
VACCHE x ALLEVAMENTO



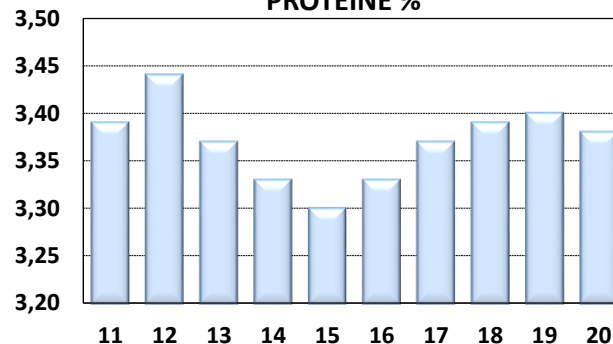
LATTE KG



GRASSO %



PROTEINE %



I DATI DEI CONTROLLI (PESO SU PESO) DIFFERISCONO DAI DATI DI CONSEGNA (PESO SU VOLUME) DI 0,3%. PER IL 2019 LE RELATIVE PERCENTUALI SONO: GRASSO % 3,94 PROTEINE % 3,48