

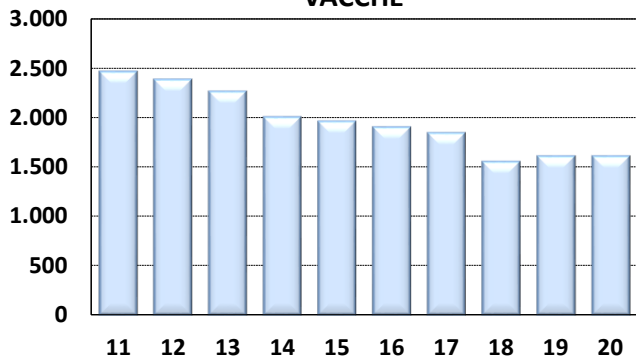


Medie Produzioni Latte/Grasso/Proteine Vacche Razza Frisona Controllate 2020

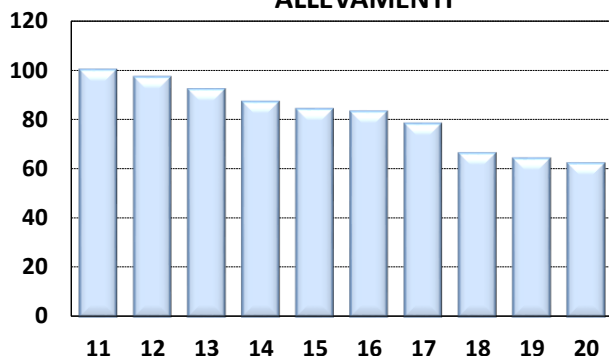
PESCARA

ANNO	CONSISTENZA		TREND FENOTIPICO			VACCHE x ALLEVAMENTO
	ALLEVAMENTI	VACCHE	LATTE KG	GRASSO %	PROTEINE %	
2011	100	2.459	7.980	3,53	3,28	25
2012	97	2.378	7.802	3,60	3,32	25
2013	92	2.257	7.791	3,56	3,29	25
2014	87	2.001	7.972	3,54	3,23	23
2015	84	1.956	8.090	3,51	3,22	23
2016	83	1.897	8.500	3,61	3,30	23
2017	78	1.839	8.485	3,55	3,25	24
2018	66	1.550	8.891	3,64	3,25	23
2019	64	1.606	8.573	3,69	3,28	25
2020	62	1.605	9.104	3,62	3,29	26

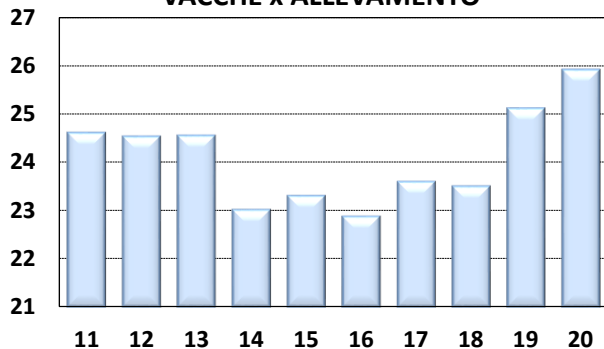
VACCHE



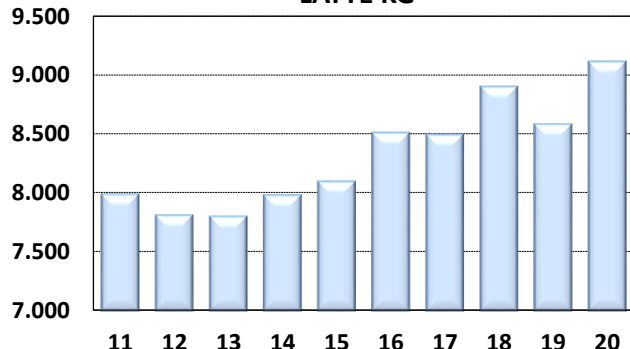
ALLEVAMENTI



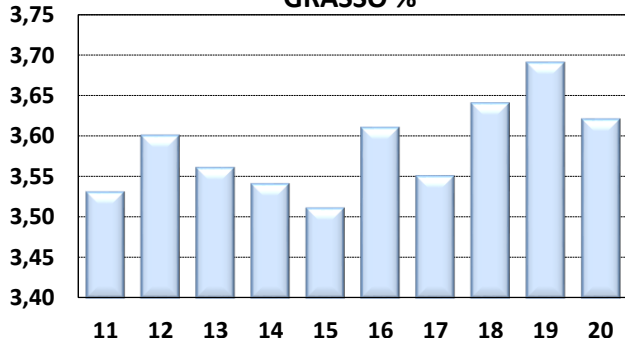
VACCHE x ALLEVAMENTO



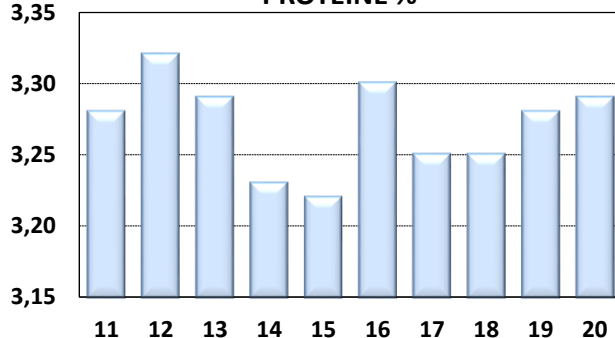
LATTE KG



GRASSO %



PROTEINE %



I DATI DEI CONTROLLI (PESO SU PESO) DIFFERISCONO DAI DATI DI CONSEGNA (PESO SU VOLUME) DI 0,3%. PER IL 2019 LE RELATIVE PERCENTUALI SONO: GRASSO % 3,73 PROTEINE % 3,39