

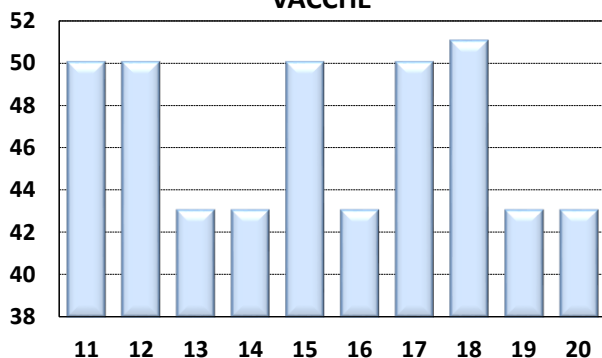


Medie Produzioni Latte/Grasso/Proteine Vacche Razza Frisona Controllate 2020

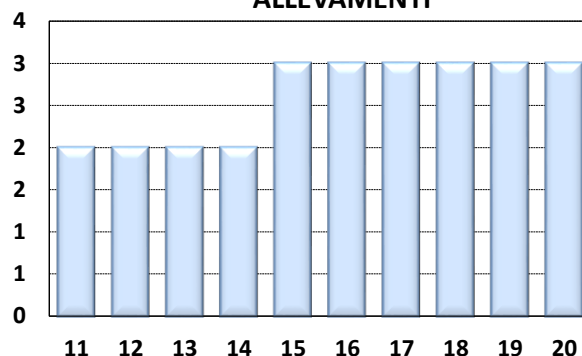
TRIESTE

ANNO	CONSISTENZA		TREND FENOTIPICO			VACCHE x ALLEVAMENTO
	ALLEVAMENTI	VACCHE	LATTE KG	GRASSO %	PROTEINE %	
2011	2	50	6.423	3,89	3,44	25
2012	2	50	7.907	3,96	3,44	25
2013	2	43	6.358	3,87	3,54	22
2014	2	43	7.263	3,98	3,45	22
2015	3	50	6.365	3,84	3,36	17
2016	3	43	6.326	3,92	3,37	14
2017	3	50	6.292	3,76	3,30	17
2018	3	51	6.833	3,88	3,38	17
2019	3	43	6.358	4,15	3,43	14
2020	3	43	6.617	3,97	3,25	14

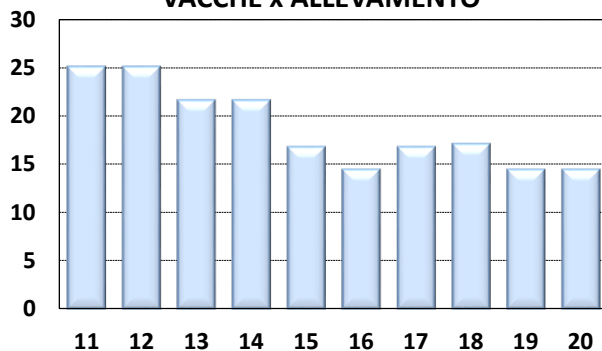
VACCHE



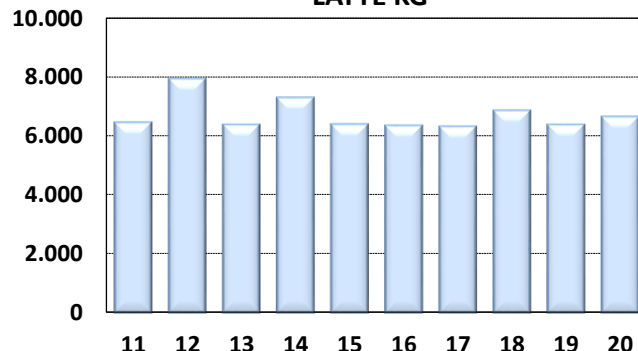
ALLEVAMENTI



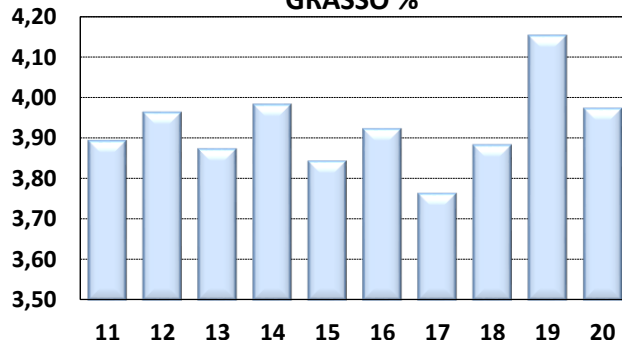
VACCHE x ALLEVAMENTO



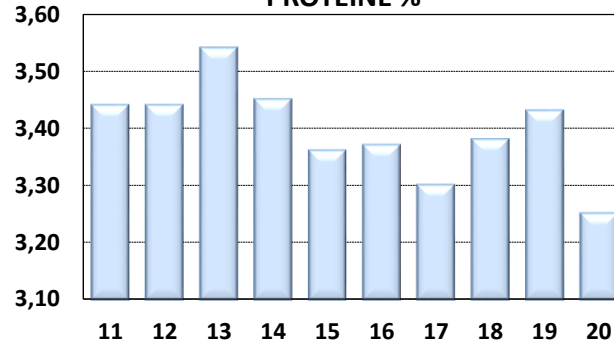
LATTE KG



GRASSO %



PROTEINE %



I DATI DEI CONTROLLI (PESO SU PESO) DIFFERISCONO DAI DATI DI CONSEGNA (PESO SU VOLUME) DI 0,3%. PER IL 2019 LE RELATIVE PERCENTUALI SONO: GRASSO % 4,09 PROTEINE % 3,35