

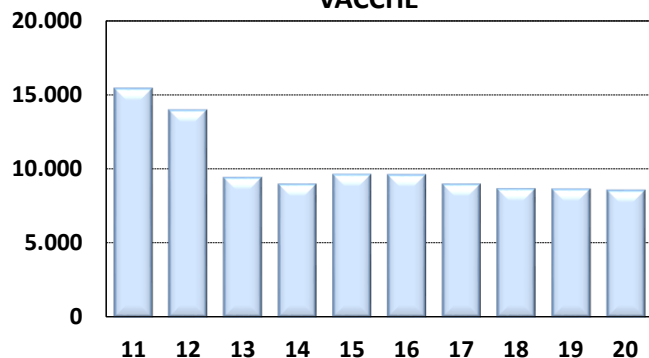


# Medie Produzioni Latte/Grasso/Proteine Vacche Razza Frisona Controllate 2020

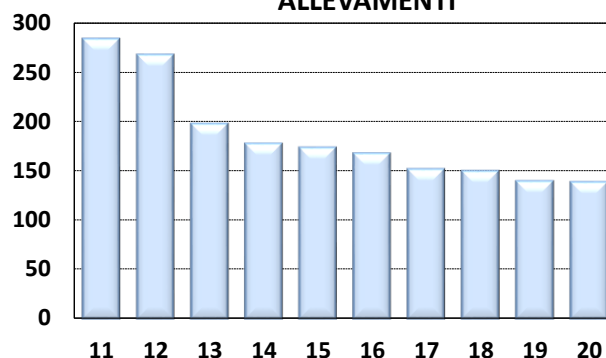
## TREVISO

ANNO	CONSISTENZA		TREND FENOTIPICO			VACCHE x ALLEVAMENTO
	ALLEVAMENTI	VACCHE	LATTE KG	GRASSO %	PROTEINE %	
2011	283	15.325	8.953	3,62	3,35	54
2012	267	13.874	9.043	3,70	3,40	52
2013	197	9.330	8.837	3,71	3,33	47
2014	177	8.872	9.155	3,64	3,28	50
2015	173	9.518	9.464	3,54	3,25	55
2016	167	9.508	9.462	3,74	3,29	57
2017	151	8.870	9.643	3,71	3,32	59
2018	149	8.553	9.811	3,73	3,34	57
2019	139	8.547	9.797	3,80	3,35	61
2020	138	8.461	10.122	3,73	3,35	61

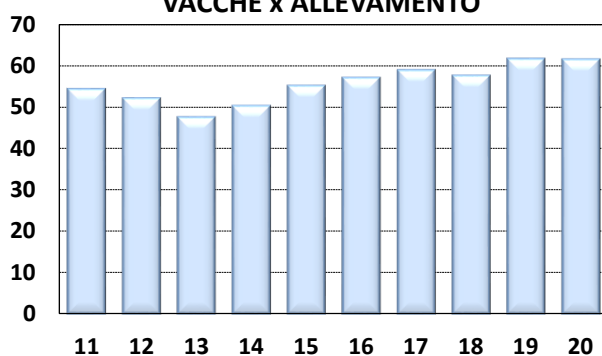
### VACCHE



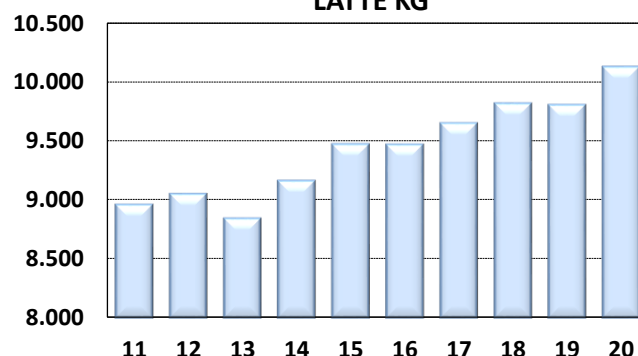
### ALLEVAMENTI



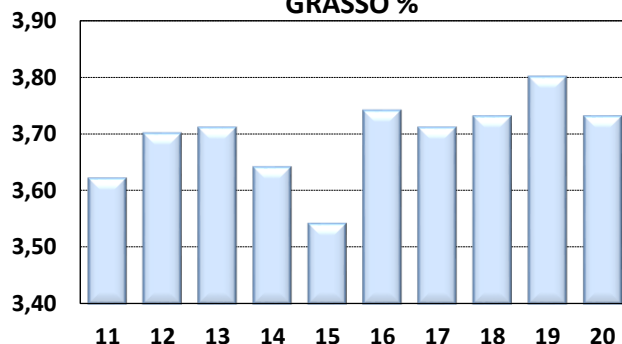
### VACCHE x ALLEVAMENTO



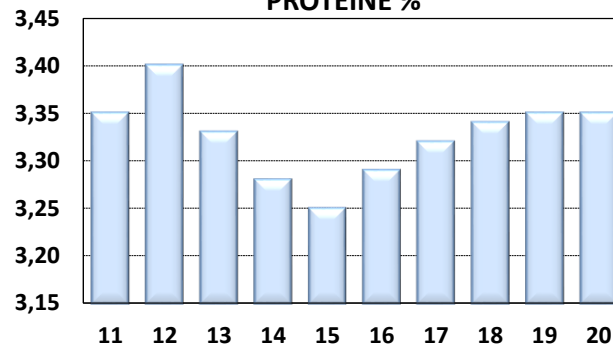
### LATTE KG



### GRASSO %



### PROTEINE %



I DATI DEI CONTROLLI (PESO SU PESO) DIFFERISCONO DAI DATI DI CONSEGNA (PESO SU VOLUME) DI 0,3%. PER IL 2019 LE RELATIVE PERCENTUALI SONO: GRASSO % 3,84 PROTEINE % 3,45