

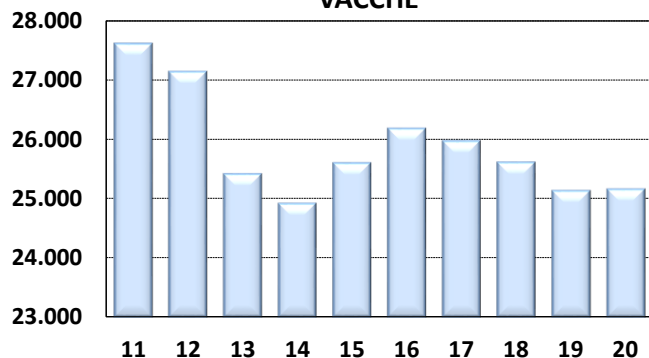


# Medie Produzioni Latte/Grasso/Proteine Vacche Razza Frisona Controllate 2020

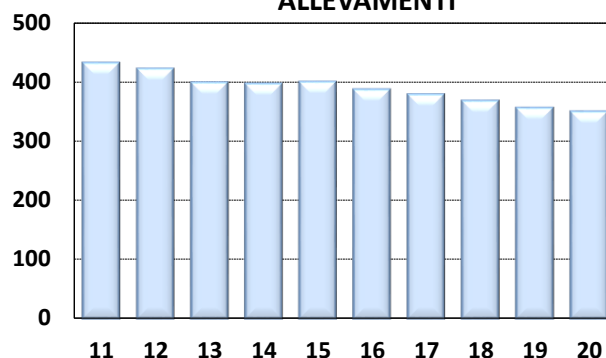
## VICENZA

ANNO	CONSISTENZA		TREND FENOTIPICO			VACCHE x ALLEVAMENTO
	ALLEVAMENTI	VACCHE	LATTE KG	GRASSO %	PROTEINE %	
2011	431	27.597	9.347	3,70	3,35	64
2012	421	27.122	9.414	3,73	3,40	64
2013	398	25.402	9.280	3,71	3,34	64
2014	396	24.906	9.538	3,68	3,32	63
2015	399	25.589	9.651	3,63	3,28	64
2016	386	26.167	9.700	3,76	3,34	68
2017	378	25.957	9.869	3,71	3,36	69
2018	367	25.598	10.043	3,74	3,38	70
2019	355	25.119	10.074	3,78	3,39	71
2020	349	25.144	10.286	3,73	3,40	72

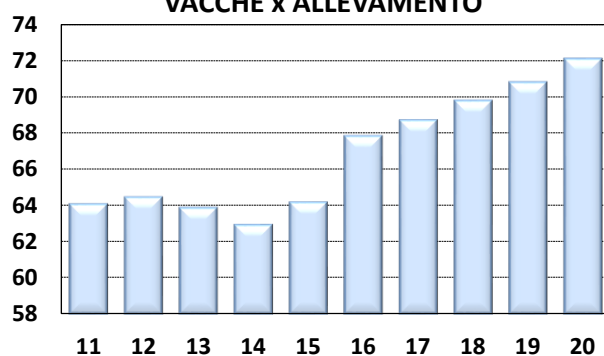
### VACCHE



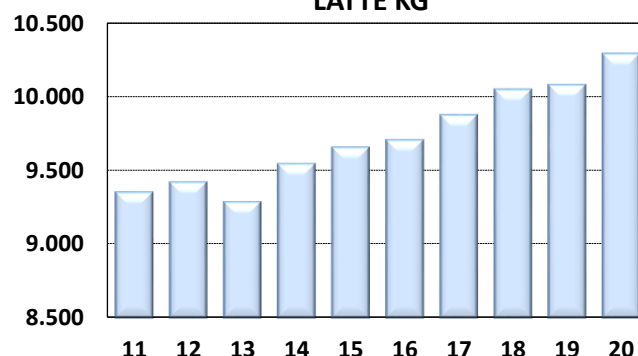
### ALLEVAMENTI



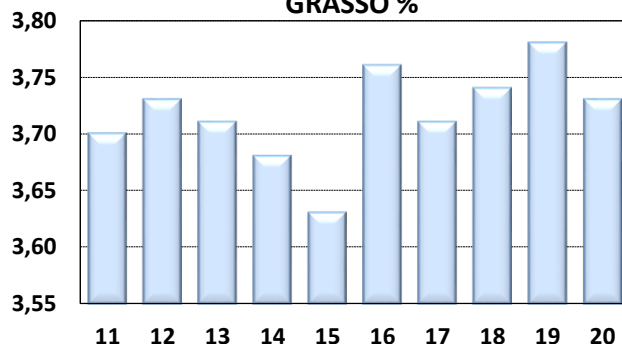
### VACCHE x ALLEVAMENTO



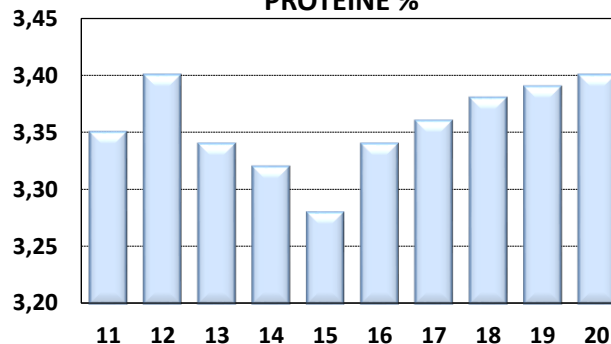
### LATTE KG



### GRASSO %



### PROTEINE %



I DATI DEI CONTROLLI (PESO SU PESO) DIFFERISCONO DAI DATI DI CONSEGNA (PESO SU VOLUME) DI 0,3%. PER IL 2019  
LE RELATIVE PERCENTUALI SONO: GRASSO % 3,84 PROTEINE % 3,50