

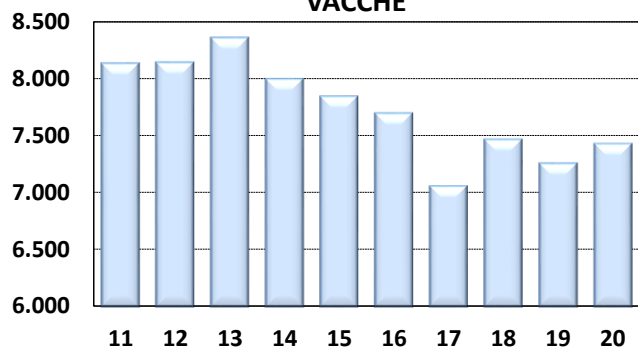


# Medie Produzioni Latte/Grasso/Proteine Vacche Razza Frisona Controllate 2020

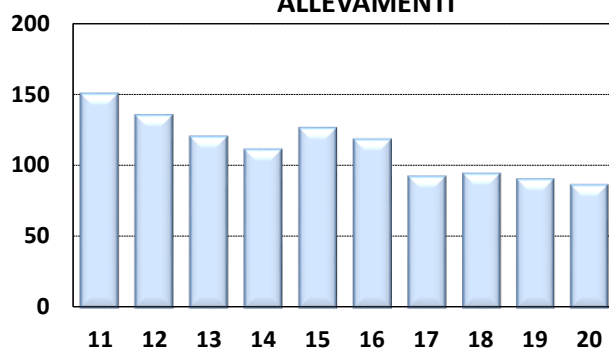
## CALABRIA

ANNO	CONSISTENZA		TREND FENOTIPICO			VACCHE x ALLEVAMENTO
	ALLEVAMENTI	VACCHE	LATTE KG	GRASSO %	PROTEINE %	
2011	150	8.129	7.927	3,78	3,43	54
2012	135	8.138	8.006	3,74	3,39	60
2013	120	8.355	7.857	3,75	3,35	70
2014	111	7.992	8.120	3,72	3,32	72
2015	126	7.840	8.390	3,71	3,31	62
2016	118	7.694	8.659	3,76	3,35	65
2017	92	7.055	9.138	3,75	3,35	77
2018	94	7.463	9.524	3,81	3,38	79
2019	90	7.255	9.640	3,83	3,36	81
2020	86	7.425	10.036	3,78	3,34	86

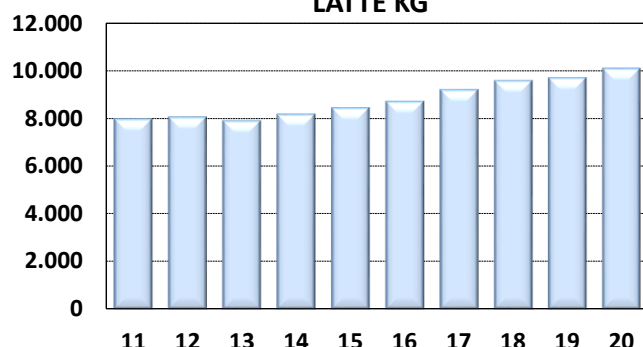
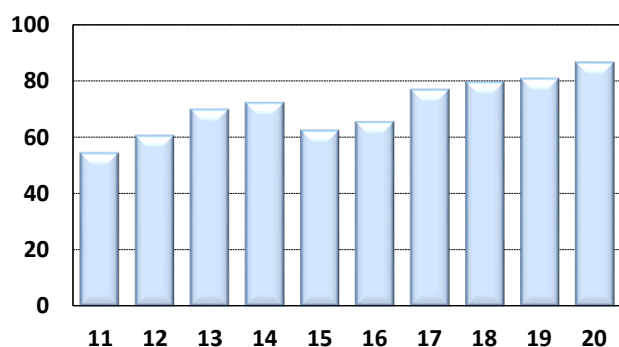
### VACCHE



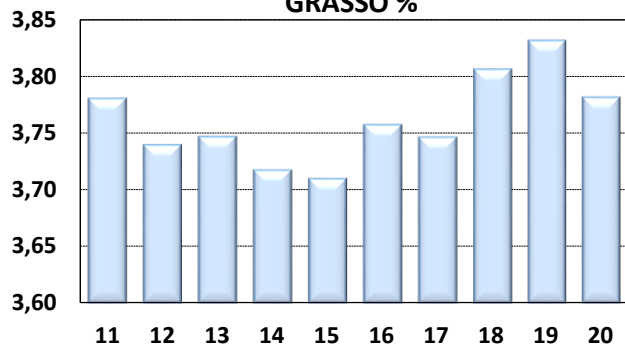
### ALLEVAMENTI



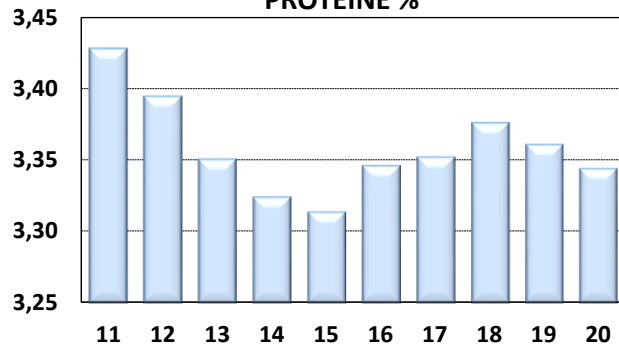
### LATTE KG



### GRASSO %



### PROTEINE %



I DATI DEI CONTROLLI (PESO SU PESO) DIFFERISCONO DAI DATI DI CONSEGNA (PESO SU VOLUME) DI 0,3%. PER IL 2020  
LE RELATIVE PERCENTUALI SONO: GRASSO % 3,89 PROTEINE % 3,44