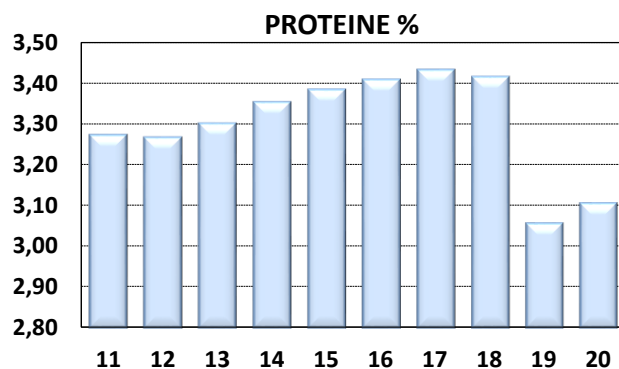
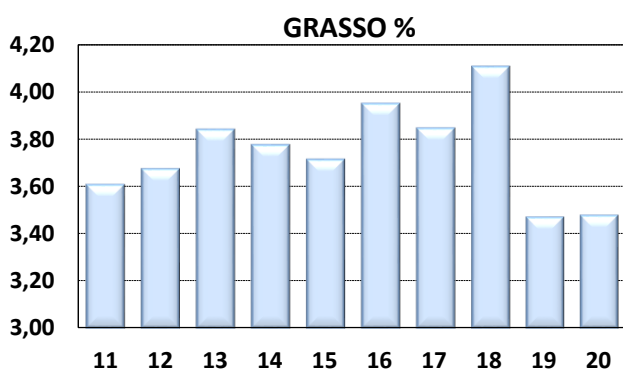
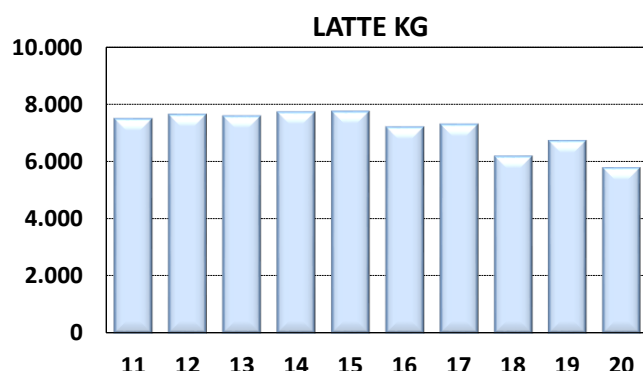
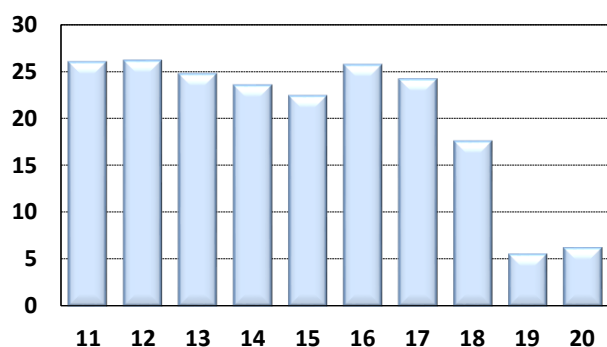
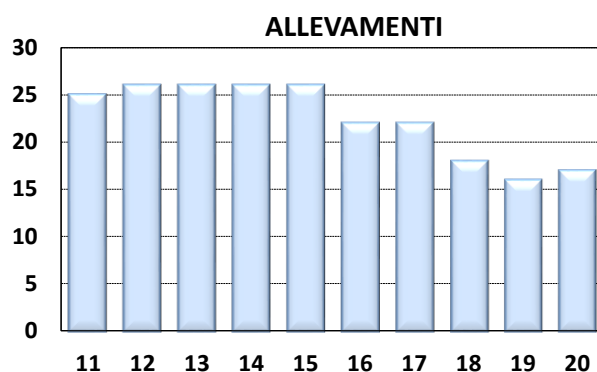
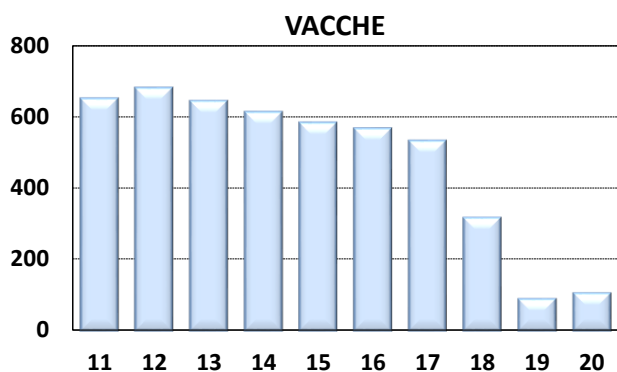




Medie Produzioni Latte/Grasso/Proteine Vacche Razza Frisona Controllate 2020

LIGURIA

ANNO	CONSISTENZA		TREND FENOTIPICO			VACCHE x ALLEVAMENTO
	ALLEVAMENTI	VACCHE	LATTE KG	GRASSO %	PROTEINE %	
2011	25	649	7.471	3,60	3,27	26
2012	26	679	7.620	3,67	3,27	26
2013	26	642	7.567	3,84	3,30	25
2014	26	611	7.701	3,77	3,35	24
2015	26	581	7.723	3,71	3,38	22
2016	22	565	7.188	3,95	3,41	26
2017	22	531	7.283	3,84	3,43	24
2018	18	315	6.157	4,11	3,41	18
2019	16	87	6.707	3,47	3,05	5
2020	17	104	5.758	3,47	3,10	6



I DATI DEI CONTROLLI (PESO SU PESO) DIFFERISCONO DAI DATI DI CONSEGNA (PESO SU VOLUME) DI 0,3%. PER IL 2020
LE RELATIVE PERCENTUALI SONO: GRASSO % 3,58 PROTEINE % 3,20