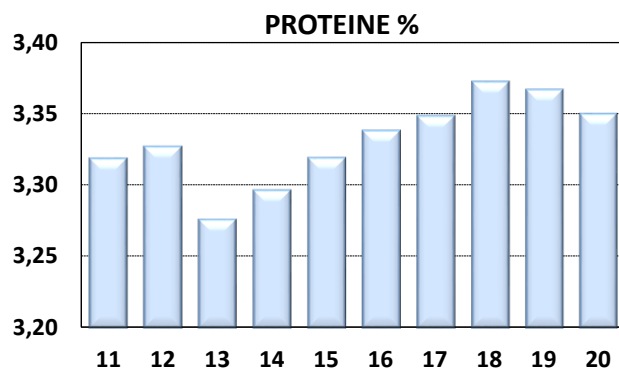
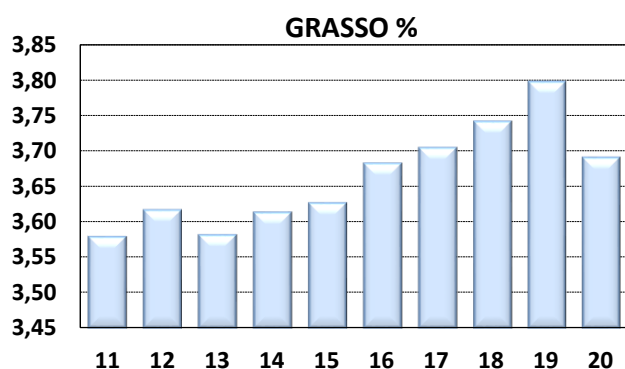
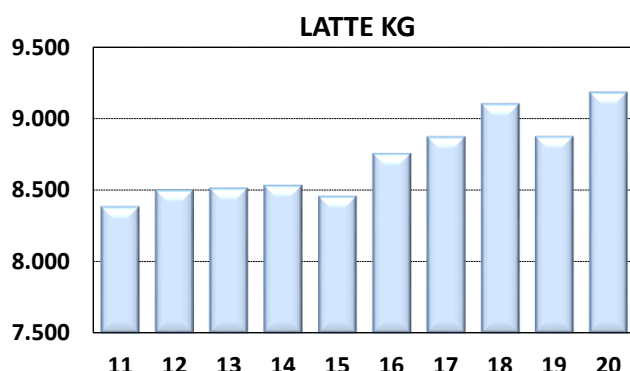
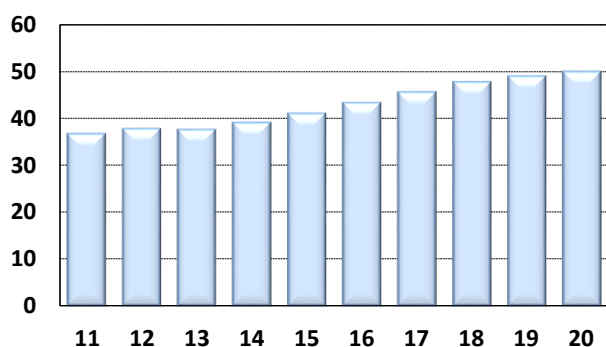
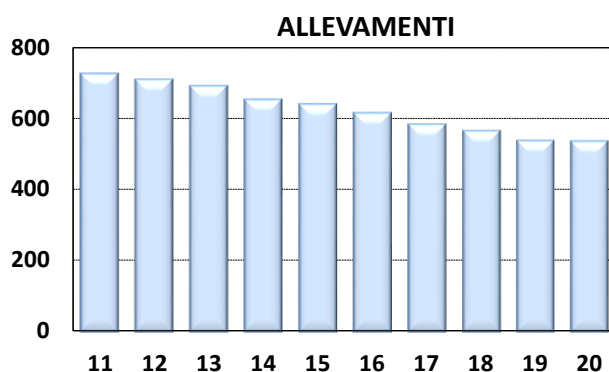
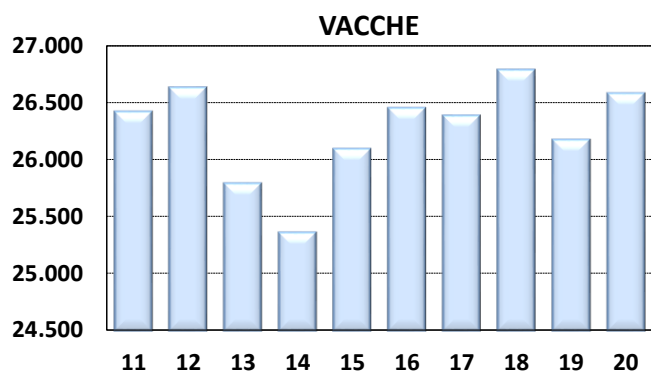




# Medie Produzioni Latte/Grasso/Proteine Vacche Razza Frisona Controllate 2020

## PUGLIA

ANNO	CONSISTENZA		TREND FENOTIPICO			VACCHE x ALLEVAMENTO
	ALLEVAMENTI	VACCHE	LATTE KG	GRASSO %	PROTEINE %	
2011	723	26.416	8.377	3,58	3,32	37
2012	707	26.626	8.494	3,62	3,33	38
2013	689	25.786	8.506	3,58	3,28	37
2014	651	25.355	8.526	3,61	3,30	39
2015	638	26.090	8.450	3,63	3,32	41
2016	613	26.448	8.748	3,68	3,34	43
2017	581	26.381	8.864	3,70	3,35	45
2018	563	26.781	9.095	3,74	3,37	48
2019	536	26.169	8.867	3,80	3,37	49
2020	534	26.577	9.175	3,69	3,35	50



I DATI DEI CONTROLLI (PESO SU PESO) DIFFERISCONO DAI DATI DI CONSEGNA (PESO SU VOLUME) DI 0,3%. PER IL 2020  
LE RELATIVE PERCENTUALI SONO: GRASSO % 3,80 PROTEINE % 3,45