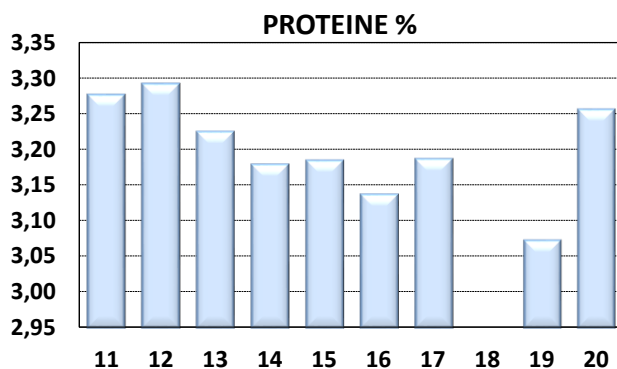
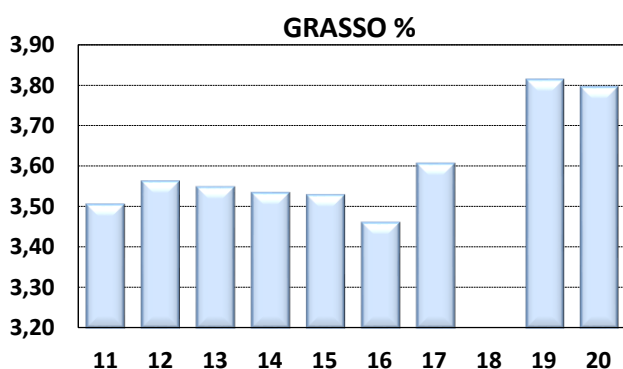
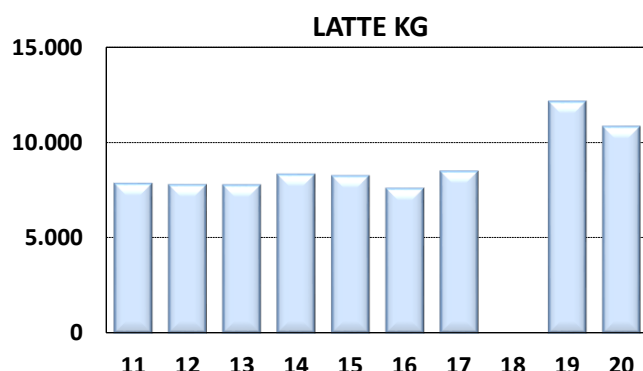
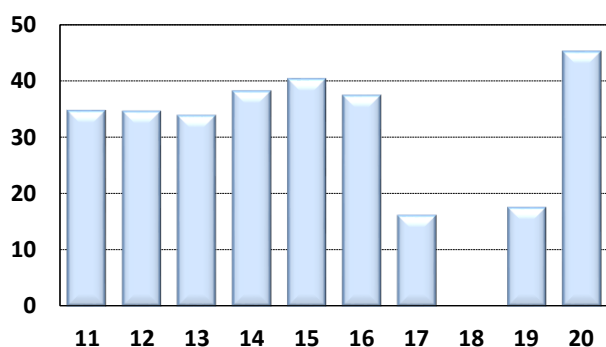
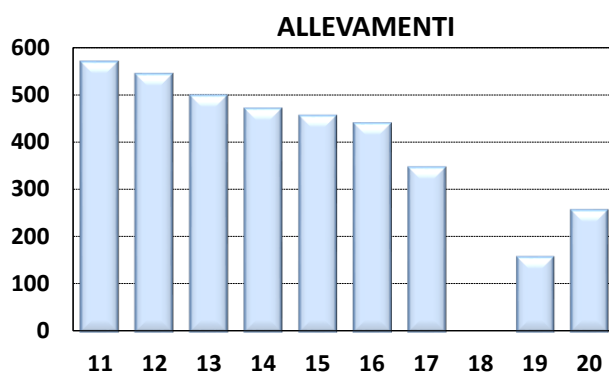
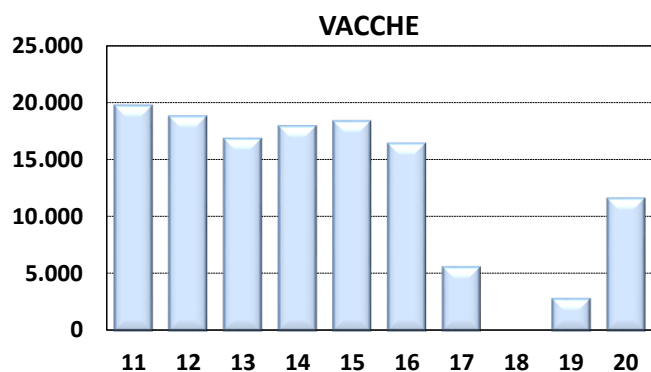




# Medie Produzioni Latte/Grasso/Proteine Vacche Razza Frisona Controllate 2020

## SICILIA

ANNO	CONSISTENZA		TREND FENOTIPICO			VACCHE x ALLEVAMENTO
	ALLEVAMENTI	VACCHE	LATTE KG	GRASSO %	PROTEINE %	
2011	569	19.648	7.782	3,50	3,28	35
2012	543	18.714	7.723	3,56	3,29	34
2013	498	16.778	7.700	3,55	3,22	34
2014	470	17.873	8.271	3,53	3,18	38
2015	455	18.288	8.182	3,53	3,18	40
2016	439	16.357	7.526	3,46	3,14	37
2017	346	5.518	8.434	3,61	3,19	16
2018	DATI NON PERVENUTI					
2019	157	2.723	12.070	3,81	3,07	17
2020	256	11.530	10.762	3,79	3,26	45



I DATI DEI CONTROLLI (PESO SU PESO) DIFFERISCONO DAI DATI DI CONSEGNA (PESO SU VOLUME) DI 0,3%. PER IL 2020  
LE RELATIVE PERCENTUALI SONO: GRASSO % 3,91 PROTEINE % 3,35