

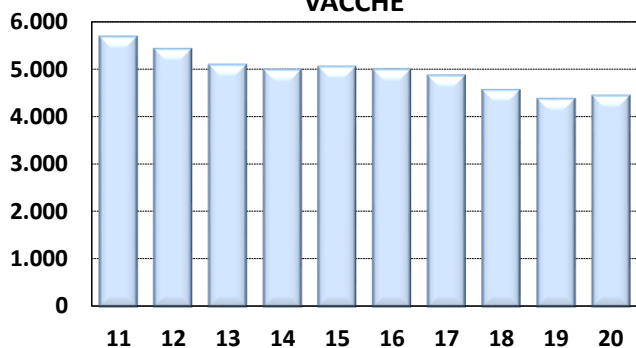


Medie Produzioni Latte/Grasso/Proteine Vacche Razza Frisona Controllate 2020

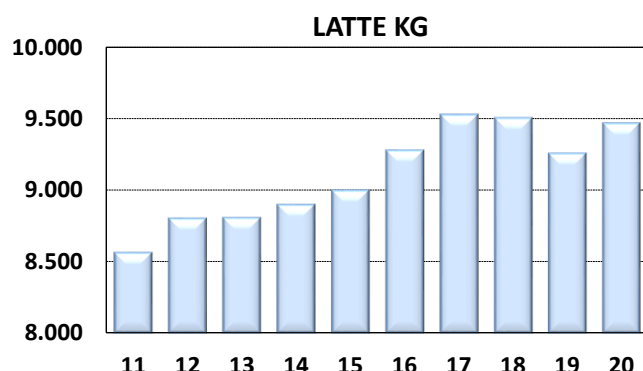
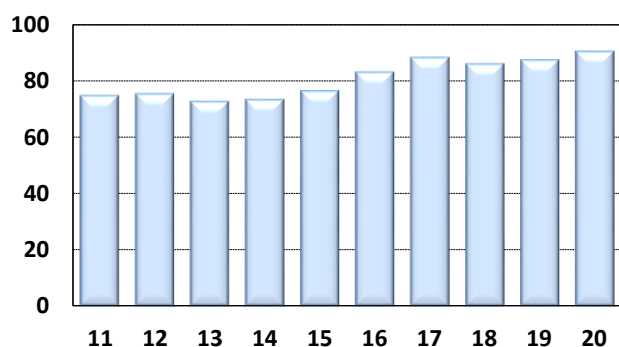
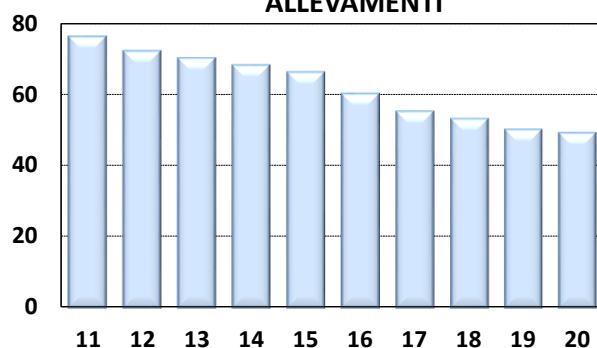
TOSCANA

ANNO	CONSISTENZA		TREND FENOTIPICO			VACCHE x ALLEVAMENTO
	ALLEVAMENTI	VACCHE	LATTE KG	GRASSO %	PROTEINE %	
2011	76	5.662	8.556	3,76	3,36	75
2012	72	5.408	8.798	3,80	3,36	75
2013	70	5.073	8.802	3,76	3,31	72
2014	68	4.969	8.894	3,69	3,22	73
2015	66	5.030	8.994	3,70	3,31	76
2016	60	4.974	9.274	3,76	3,34	83
2017	55	4.845	9.523	3,82	3,34	88
2018	53	4.545	9.497	3,89	3,38	86
2019	50	4.360	9.252	3,90	3,36	87
2020	49	4.422	9.463	3,84	3,34	90

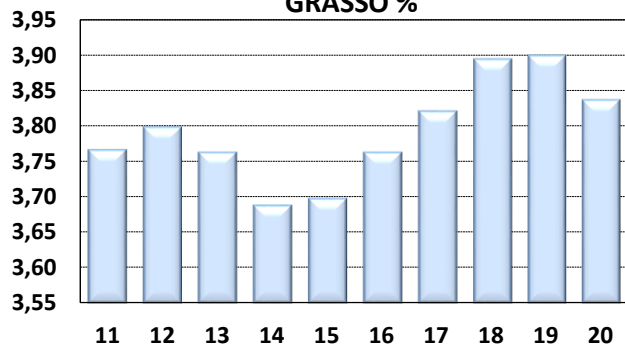
VACCHE



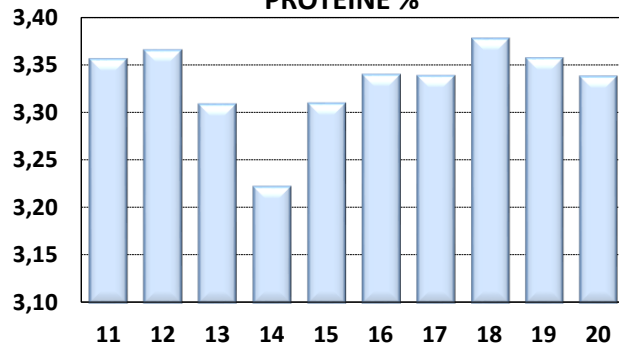
ALLEVAMENTI



GRASSO %



PROTEINE %



I DATI DEI CONTROLLI (PESO SU PESO) DIFFERISCONO DAI DATI DI CONSEGNA (PESO SU VOLUME) DI 0,3%. PER IL 2020
LE RELATIVE PERCENTUALI SONO: GRASSO % 3,95 PROTEINE % 3,44