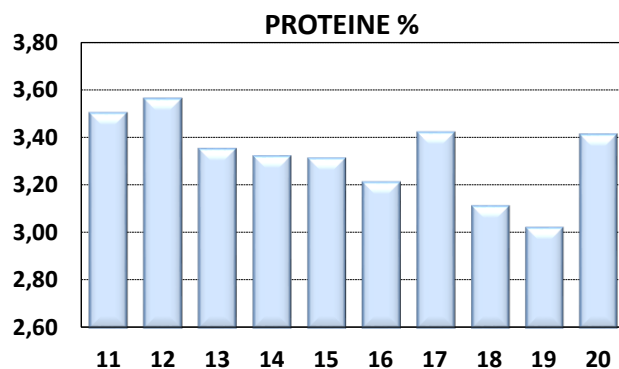
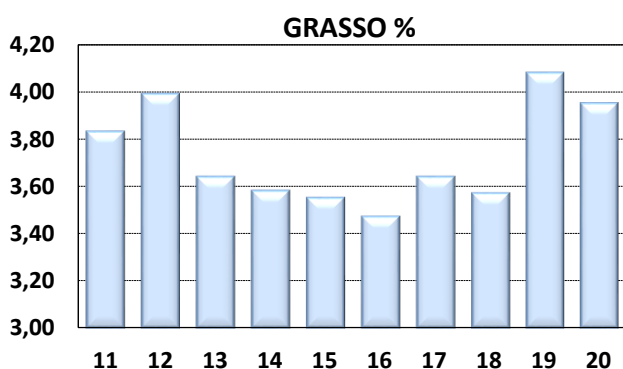
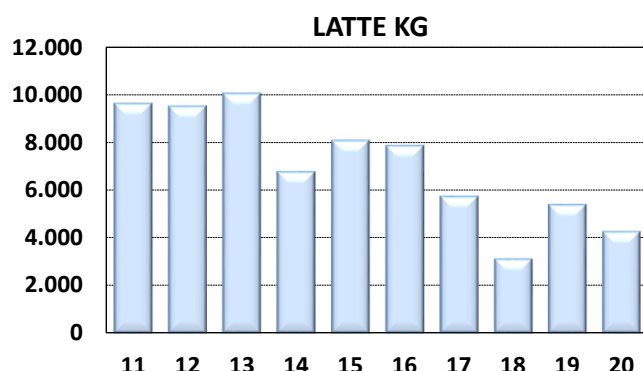
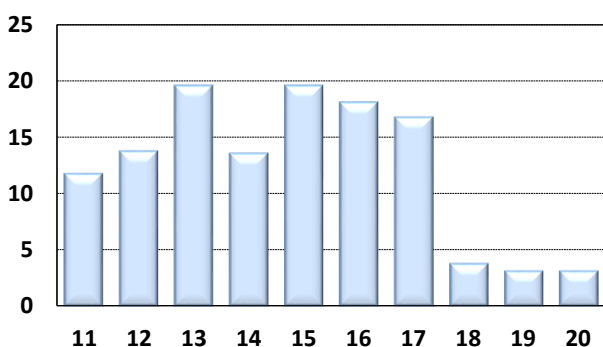
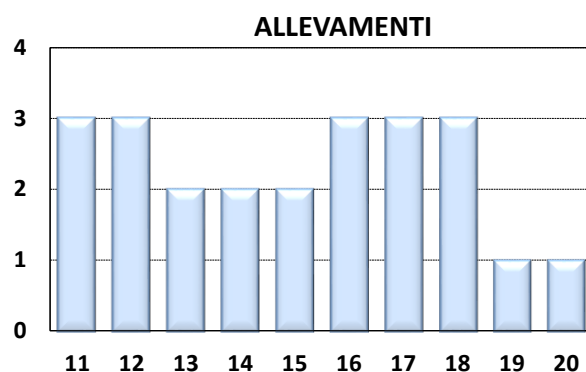
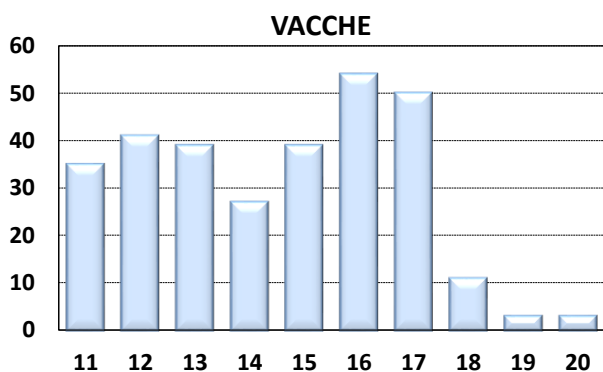




Medie Produzioni Latte/Grasso/Proteine Vacche Razza Frisona Controllate 2020

VALLE D'AOSTA

ANNO	CONSISTENZA		TREND FENOTIPICO			VACCHE x ALLEVAMENTO
	ALLEVAMENTI	VACCHE	LATTE KG	GRASSO %	PROTEINE %	
2011	3	35	9.605	3,83	3,50	12
2012	3	41	9.484	3,99	3,56	14
2013	2	39	10.022	3,64	3,35	20
2014	2	27	6.732	3,58	3,32	14
2015	2	39	8.042	3,55	3,31	20
2016	3	54	7.823	3,47	3,21	18
2017	3	50	5.689	3,64	3,42	17
2018	3	11	3.054	3,57	3,11	4
2019	1	3	5.351	4,08	3,02	3
2020	1	3	4.208	3,95	3,41	3



I DATI DEI CONTROLLI (PESO SU PESO) DIFFERISCONO DAI DATI DI CONSEGNA (PESO SU VOLUME) DI 0,3%. PER IL 2020
LE RELATIVE PERCENTUALI SONO: GRASSO % 4,07 PROTEINE % 3,51